



# From Tidewater to Tarheel to Kentucky: A Taylor Family Story, 1750– about 1808

TRACING EARLY AMERICAN FAMILY MIGRATION  
ACROSS KEY REGIONS

# Setting the Journey

# A Family on the Move

## Migration as a Journey

The Taylor family's moves represent a connected, purposeful journey across early America.

## Motivations Behind Movement

Family migration was driven by land availability, social changes, and opportunity.

## Dynamic Geography

Geography changed with county boundaries and expansion, influencing migration decisions.

## Historical Context

The family's migration reflects broader patterns in early American history and settlement.





# The Big Picture: Virginia to Kentucky

## Migration Route Overview

Shows the full migration path from Virginia through North Carolina to Kentucky to orient the audience early.

## Core Themes: Land, Labor, Independence

Highlights how land ownership, labor, and desire for independence shaped migration decisions in colonial America.

## Continuity Across Generations

Emphasizes the long-term journey and generational continuity instead of isolated moves.

# Colonial Virginia: When Opportunity Closed

# Early Roots in Norfolk County, Virginia

## Arrival in Colonial Virginia

Richard Taylor arrived in Virginia in 1635 aboard the ship *Truelove* during a period of early instability.

## Virginia's Social Hierarchy

Virginia's social structure concentrated land and power among wealthy elites, limiting opportunities for common families.

## Yeoman Farmer Status

Early Taylors were yeoman farmers owning and working their own land, signifying independence and respectability.

## Economic and Cultural Trends

Taylor family fortunes fluctuated with broader economic and cultural changes, influencing migration decisions.



# From Yeoman to Landless

## Land Loss Over Generations

The Taylor family gradually lost land, reflecting wider colonial Virginia trends of property concentration.



## Limited Social Mobility

Despite hard work and tax payments, social structures limited advancement for ordinary families in Virginia.

## Impact on Family and Records

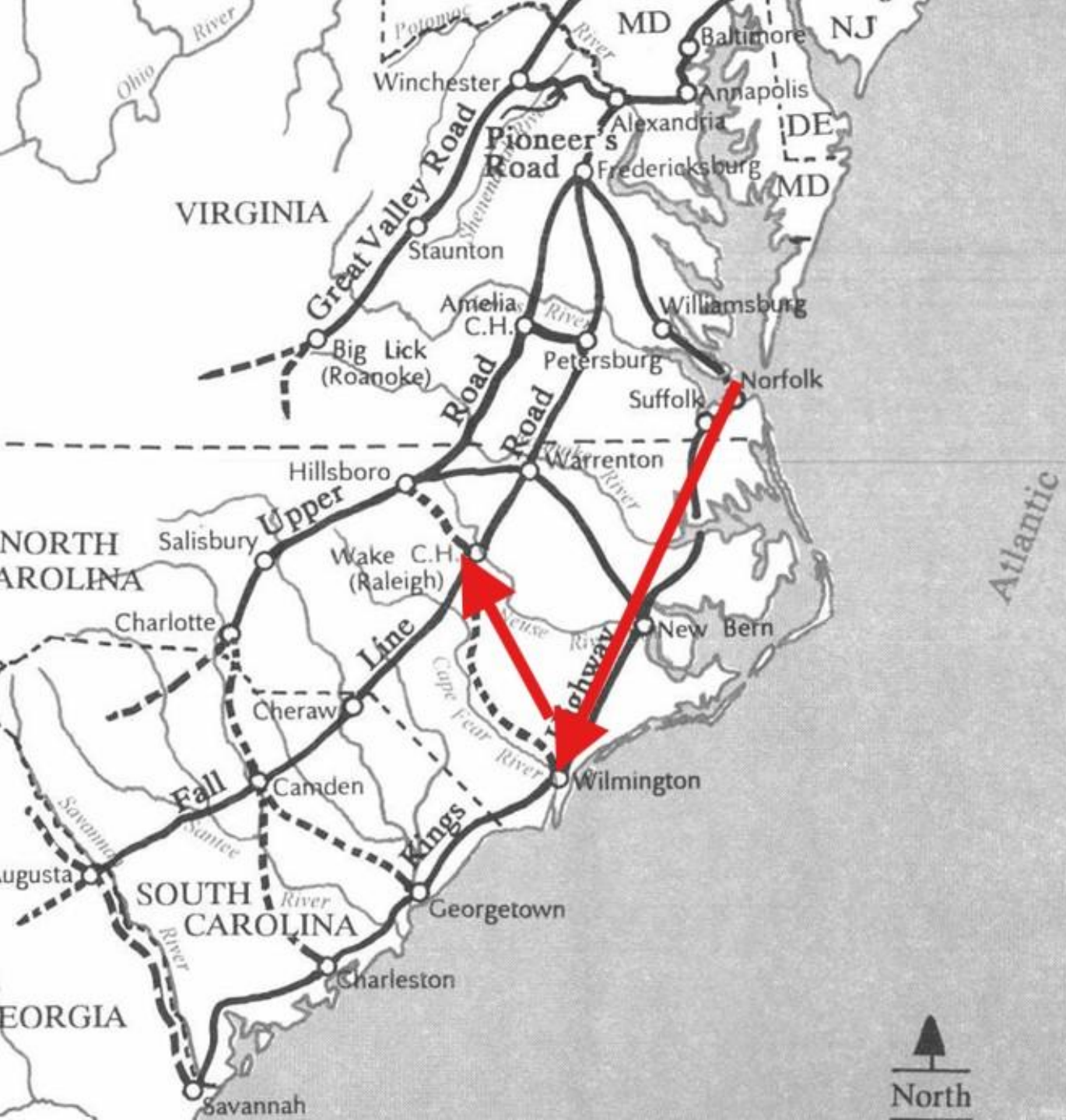
Declining assets and limited literacy explain thinning genealogical records and family migration.





# North Carolina and the Revolutionary Era

C.1756-1780



# Migration Move #1

VIRGINIA TO CONETOE CREEK, NORTH CAROLINA

# A Fresh Start in Tarheel Country

## Land Grant and New Ownership

Joseph Taylor Sr. acquired land through a Granville grant, gaining ownership despite challenging swampy terrain.

## Tarheel Country Settlement

The region was settled by working families, fostering an egalitarian culture unlike wealthy planter societies.

## Opportunity and Fresh Start

The move to North Carolina symbolized economic independence and a fresh start for the Taylors and others.

## Historical Record Challenges

Shifting county boundaries caused records to change locations, complicating historical research of the family.



# The Revolutionary War: Two Joseph Taylors

## Joseph Taylor Sr.'s Role

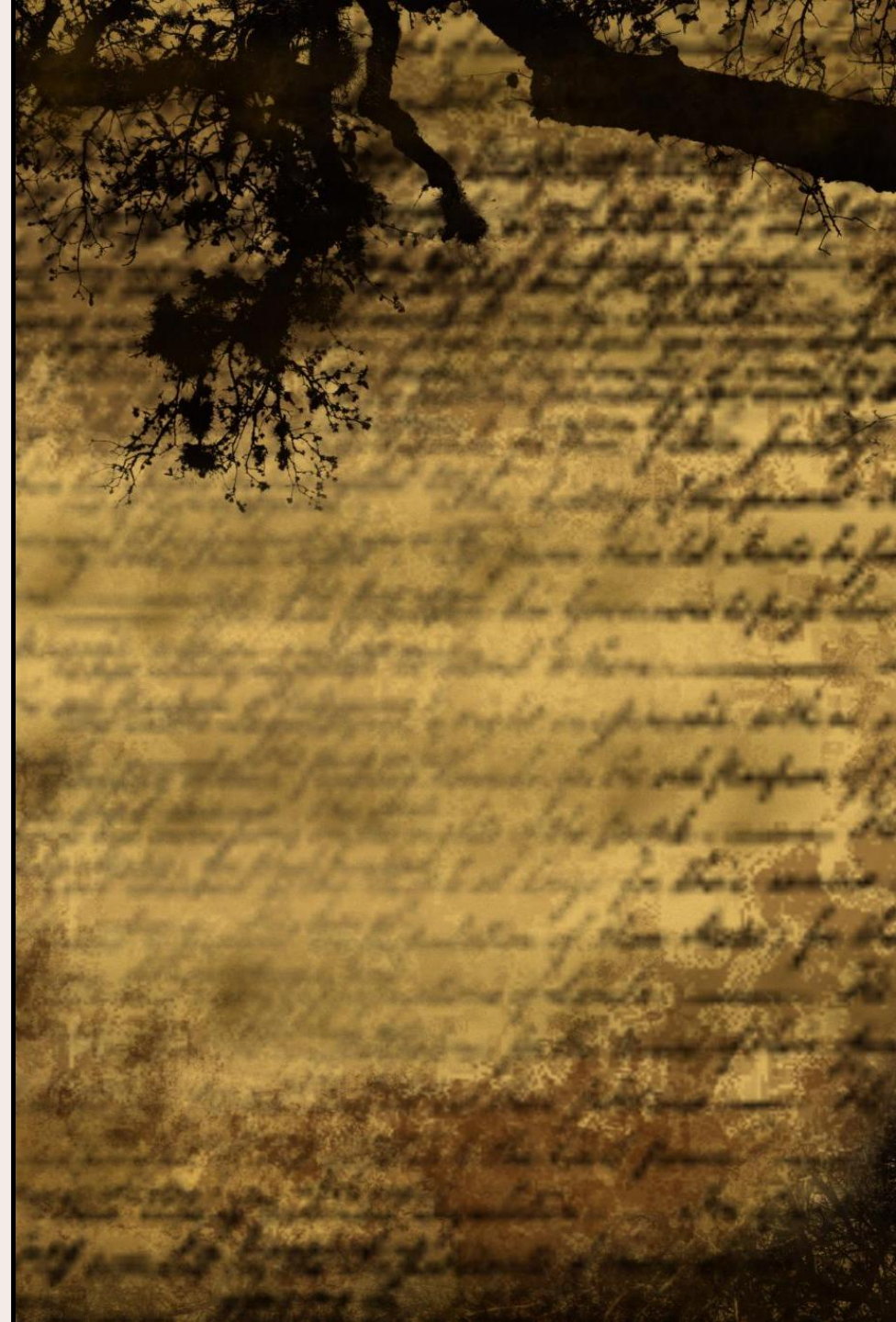
Joseph Sr. was a landowner involved in cautious neighbor meetings and signed loyalty oaths, supporting Patriots with supplies.

## Joseph Taylor Jr.'s Role

Joseph Jr. served as a militia private, was likely wounded, and his service helped descendants join heritage organizations.

## Family Contributions and Genealogy

Both men contributed uniquely, highlighting how family support varied and the importance of distinguishing generations in records.



# Moving West Through the Cumberland Gap

# Why Opportunity Moved West

## Westward Land Opportunity

Post-Revolution, fertile lands in Kentucky and Tennessee attracted families seeking new opportunities and land ownership.

## Family Movement Pattern

The Taylor family's migration reflected a common pattern of moving when opportunity shifted, emphasizing continuity over restlessness.

## Broader American Trend

Their move aligns with the larger trend of westward expansion driven by seeking independence and economic growth.

## Audience Perspectives

The move illustrates economic reasons, opportunity horizons, and genealogical migration insights for different audiences.





# Through the Cumberland Gap

## Historic Migration Route

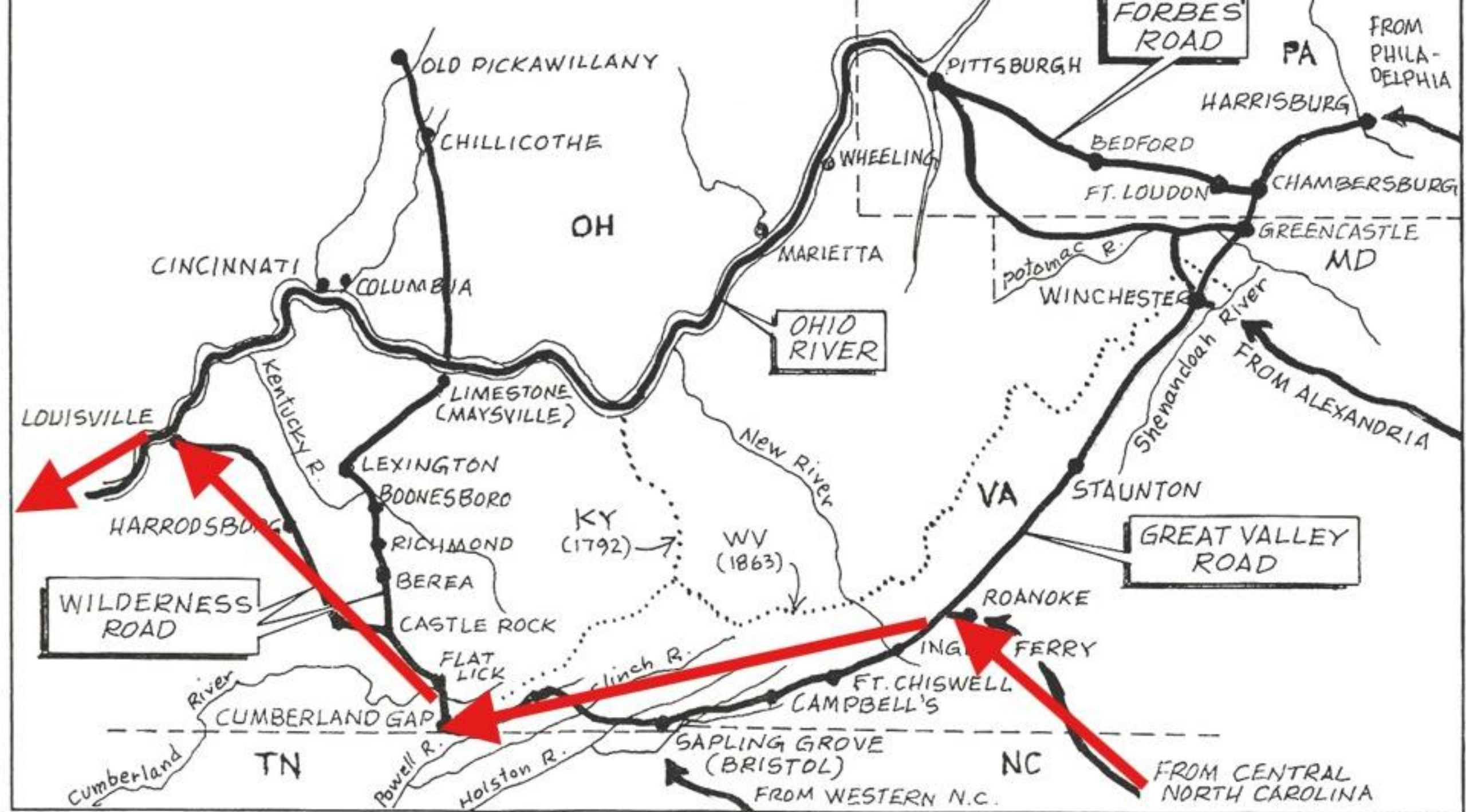
The Cumberland Gap served as a key gateway to the western frontier for hundreds of thousands of travelers using the Wilderness Road.

## Challenging Journey Conditions

The journey through the Cumberland Gap was difficult, muddy, and dangerous, requiring careful planning by families.

## Shared Migration Experience

The route symbolized collective movement and shared paths, with later generations continuing to use the same passage westward.





# Migration Move #2

North Carolina to Kentucky

# Kentucky: Putting Down Roots



Photo of Log Cabin that purport  
elonged to Joseph Taylor Jr.

# Richardsville, Kentucky

## **Westward Settlement**

The Taylor family's move to Richardsville marked their long-term settlement on the American frontier around 1808.

## **Importance of Water Sources**

Reliable springs like Jake's Spring ensured survival, daily life, and food preservation for early settlers.

## **Family and Land Connection**

Maps show family clusters nearby, linking land, genealogy, and heritage to this Kentucky region.

## **Generational Continuity**

Some Taylor family land remains today, highlighting deep-rooted heritage and continuity across generations.



# Richardsville, Kentucky Family

Previous  
Reunion pageant



# Richardsville Taylor Land





# Memory, Community, and Legacy

## **Family Presence and Support**

The Taylor family remained rooted in Kentucky with support from children and loyal servants after Joseph Taylor Jr.'s death.

## **Preserving Generations in Cemeteries**

Taylor and Hudnall graveyards preserve memories of multiple generations, including those without formal markers.

## **Churches as Community Centers**

Green River Union Church and Mt. Zion Church served as spiritual and social centers built with local materials.

## **Legacy of Wise Choices**

The Taylor family's choices created a lasting foundation of land, independence, and community across generations.

TAYLOR CEMETERY



# TAYLOR

JOSEPH TAYLOR, SR.  
REVOLUTIONARY SOLDIER,  
5TH N. C. GAP, BLOUNTS CO.,  
BORN IN ORANGE CO., VA.  
1751—DIED MAR. 22, 1818

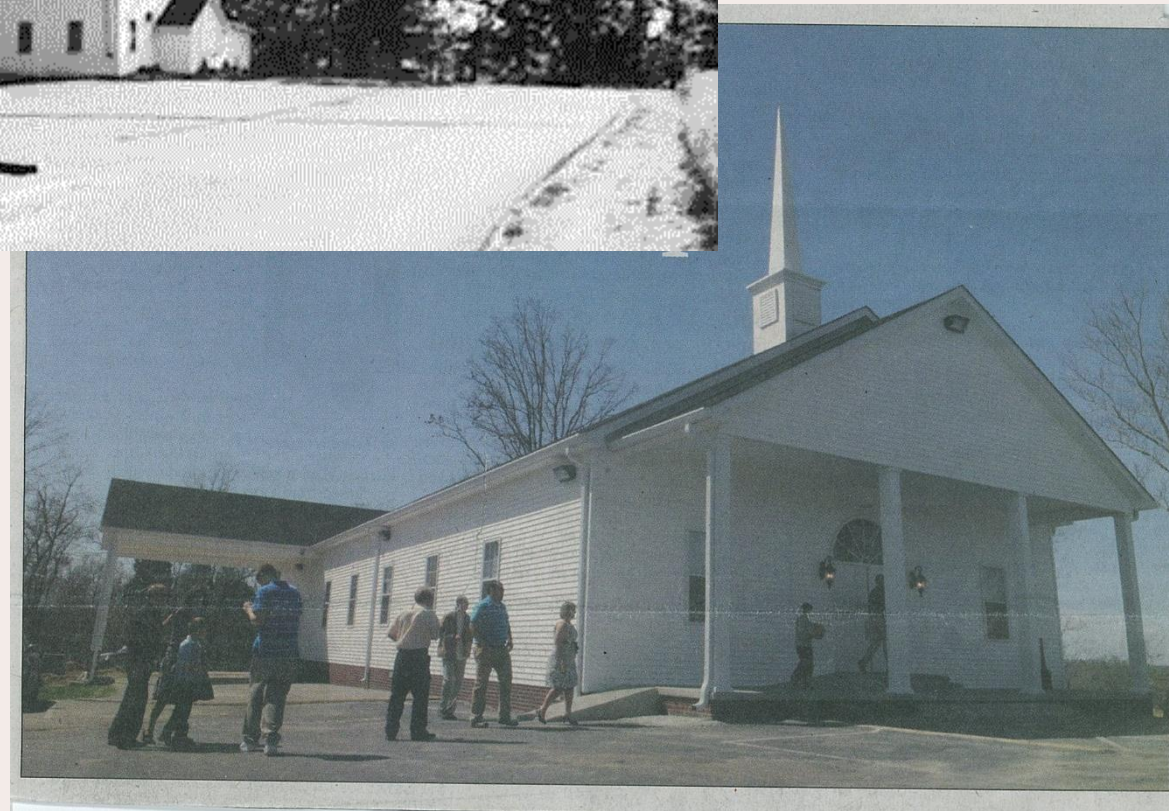
SARAH BEST TAYLOR,  
WIFE OF JOSEPH TAYLOR, SR.  
BORN IN EDGECOMBE CO., N. C.  
ABOUT 1760—DIED 1834

PARENTS OF TWELVE CHILDREN  
KENTUCKY PIONEERS AND SETTLED HERE IN 1808  
"THE MULTITUDE OF THEIR DESCENDANTS  
RISE UP TO CALL THEM BLESSED"

MAY 1928



Mt. Zion Church of Christ



Green River Union Church

# Taylor Land in Kentucky



**Wisdom—  
passed  
from one  
generation  
to the next.**

